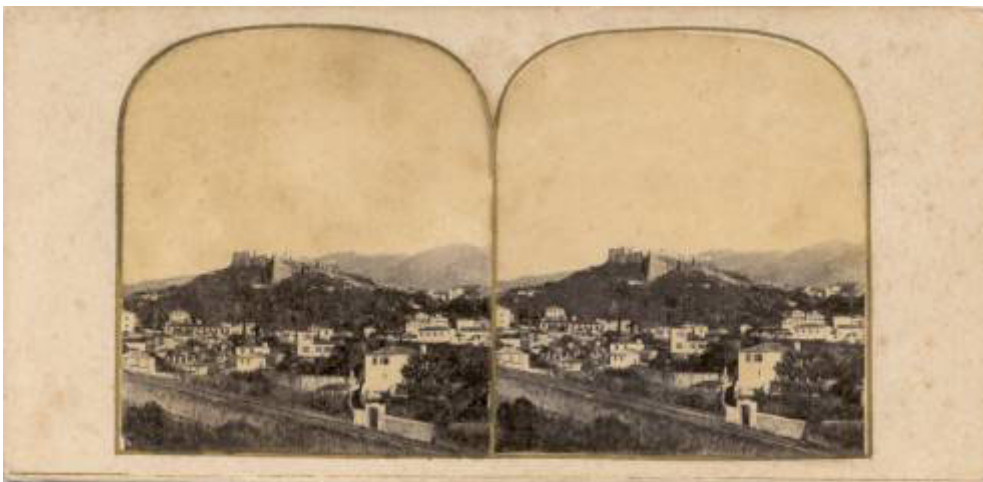




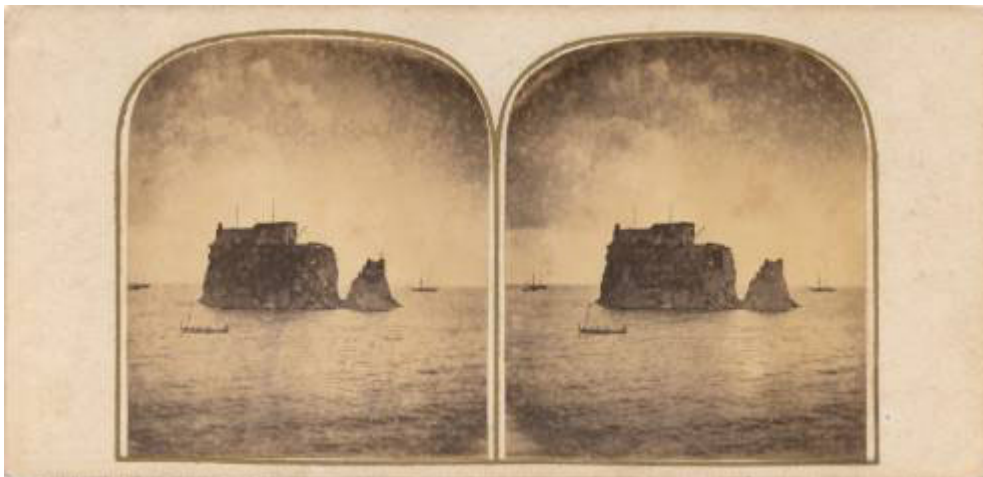
nn1 - Funchal from the West - An early view of Madeira, with the caption (Madeira – Funchal from the West) printed in a label glued vertically on the backside. Handwritten below the caption: '91 - HMS Peterel – March 29th, 1862'. It is interesting to refer that this type of view seems to be common in the early years of paper stereoscopy, as early as the first half of the 1850s. In reply to a question about an 1854 Langenheim paper stereo view, William Culp Darrah stated that '(...) the Langenheims first issued their cards on a thin white card mount with the prints of smaller size and framed in a broad gold border (...)'. (interview conducted by John Waldsmith and published serially in Stereo World during 1977 / 1978, also available from the Institute of Photographic Research).



nn2 - The Peak Fort - Handwritten in the backside: '90 – Madeira – The Peak Fort – HMS Peterel – March 29th, 1862'.



nn3 - Madeira – The Mountain Stream - Caption printed in a label glued vertically on the backside: 'Madeira – The Mountain Stream'. Handwritten below the caption: '89 - HMS Peterel – March 29th, 1862'.



nn4 - The Loo Rock - Handwritten in the backside: 88 – Madeira – The Peak Fort – HMS Peterel – March 29th, 1862'.



nn5 - The Mount Church – 1.965 feet above the sea - The adhesive stamp on the upper left corner seems to represent some letter (D?).



nn6 - Portuguese Cemetery - The adhesive stamp on the upper left corner seems to represent some letter (D?).



nn7 - Funchal from the Mount - The caption is handwritten on the backside.



nn8 - Madeira – The Mount Church - Handwritten in the backside: 'Madeira – The Mount Church'.





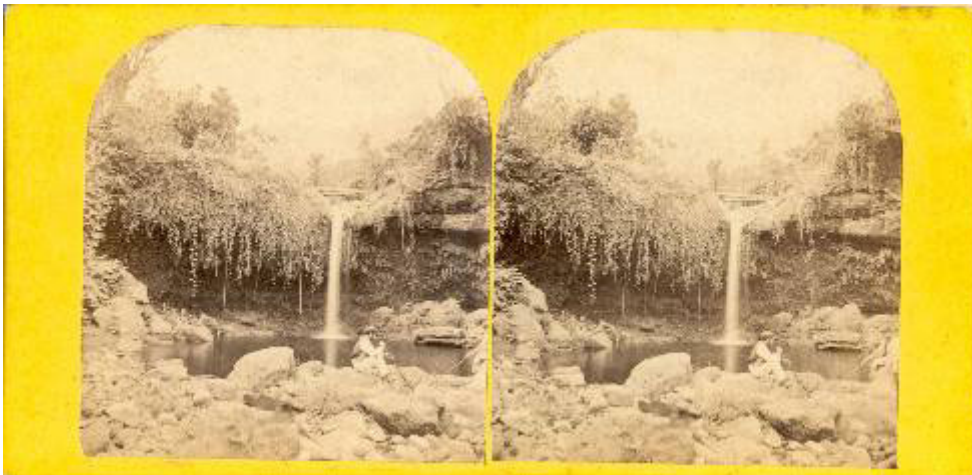
nn9 - Loo Rock and Pontinah, Madeira - Caption printed in a vertical adhesive label on the backside: 'Loo Rock and Pontinah, Madeira (instantaneous.)' (should be 'Pontinha' instead of 'Pontinah')



nn10 - At the Empress Hospital, Funchal - (handwritten caption) Label in the back: 'H. F. Dilley, Stationer, Bookseller, Madeira'.



nn11 - Eagle Rock, North Madeira - (handwritten caption) Label in the back: 'H. F. Dilley, Stationer, Bookseller, Madeira'. Another of these same views has a handwritten caption in Portuguese saying: 'Penha d'Águia, vista do Porto da Cruz, Norte, Madeira'.



nn12 - Streams, North Madeira - (handwritten caption) Label in the back: 'H. F. Dilley, Stationer, Bookseller, Madeira'.



nn13 - Peak Fort – Funchal – Madeira - (handwritten caption on the back)



nn14 - View of Mountain River at its Mouth; Funchal Madeira - (handwritten caption on the front and back) (formerly in the collection of Tex Treadwell)





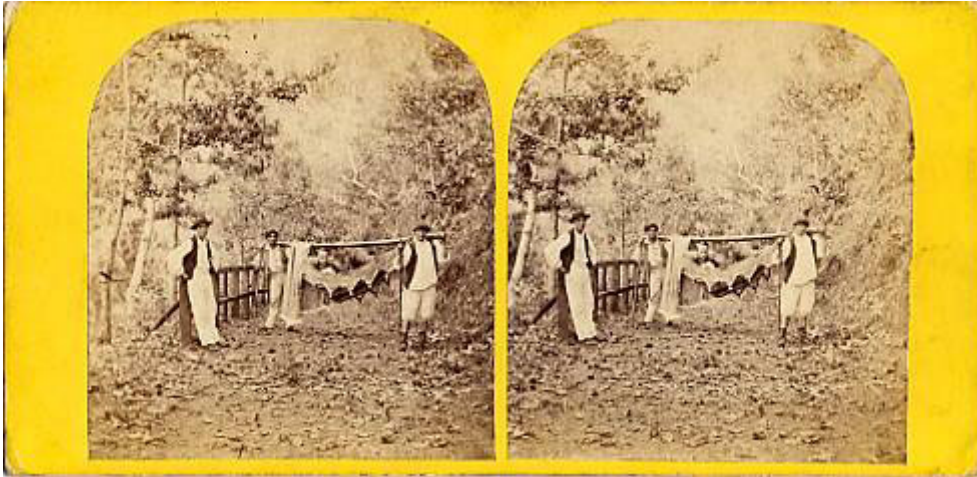
nn15 - New Tunnel at St. Vincent North Madeira - (handwritten caption on the front and back) Label in the back: 'H. F. Dilley, Stationer, Bookseller, Madeira'. (formerly in the collection of Tex Treadwell)



nn16 - Funchal from the Harbour – Isle of Madeira (actually, it's a view of Funchal from the East, instead of what is written) - (handwritten caption on the back; includes the following remark: 'Uncle Tom Reid, US Consul at Madeira, 1880-1884) Probable date of this view is 1860s. (formerly in the collection of Tex Treadwell)



nn17 - Bridge of Sighs Funchal, Isle of Madeira - (handwritten caption on the back) (formerly in the collection of Tex Treadwell)



nn18 - (a hammock carried on shoulders in the woods) - (courtesy of Nuno Borges de Araújo)



nn19 - (a – not very interesting, even if uncommon – view of Funchal) -



nn20 - Fountain at the Ribeiro Frio, ... (?), Madeira - (the caption is handwritten in the back)



gv1 - Madeira (Loo Rock) – a glass view in 45 x 107 mm - Verascope format (handwritten date of March 1913).