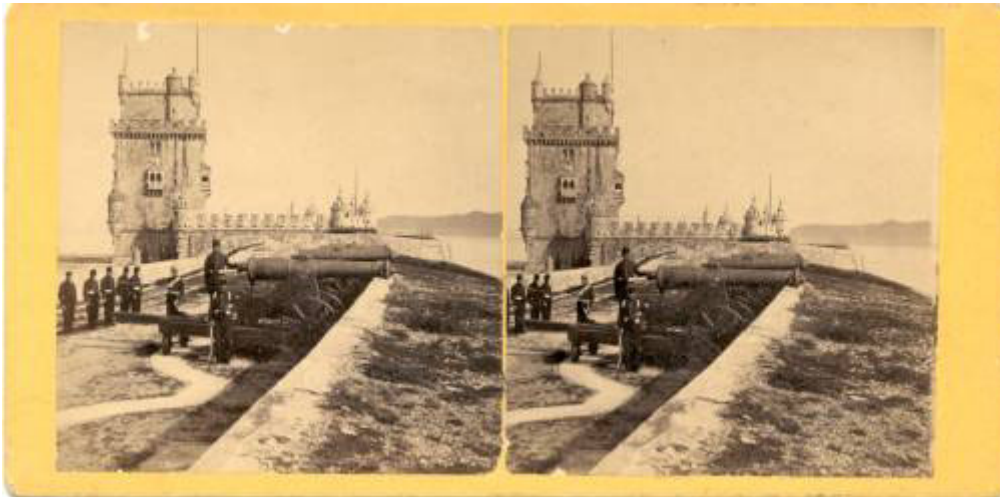
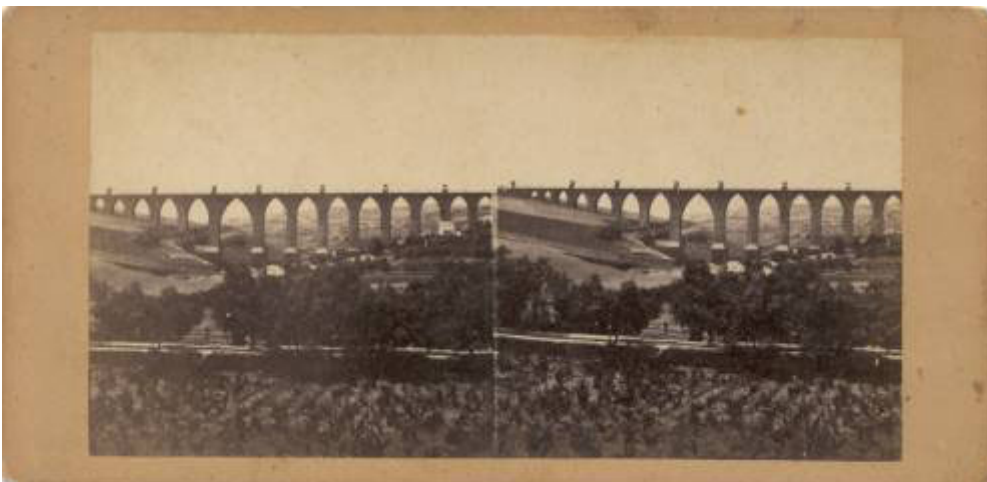




nn1 - Dom Pedro IV. square in Lisbon - Taken exactly from the same location as in Rocchini's view (see Other Portuguese stereographers / Francisco Rocchini) and probably made in the same day as well, as may be seen by comparing the two images.



nn2 - Torre de Belem (Belem Tower) - Handwritten on the back: 'Lisboa = Torre de Belem'. Stamped on the back: 'Agustin Molina – Optico – Zaragoza, 18' (seller?).

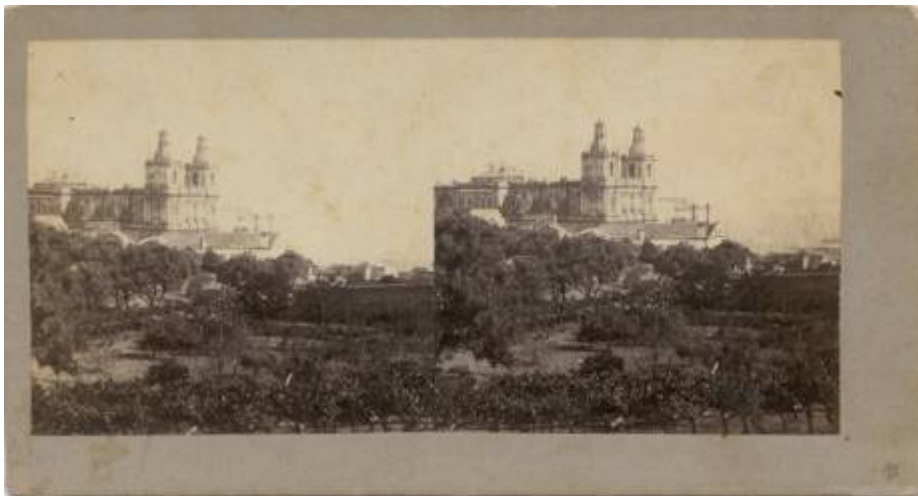


nn3 - (aqueduct in Lisbon) - (Nicely) Handwritten on the back: 'Harpers Hand Book says there is no

monument of man's labor and skill pertaining either to ancient or modern Rome for whatever purpose designed which can rival the water works of Lisbon and which discharges (...?) of cool and delicious water into the rocky cister[n]s within that beautiful edifice called the Mother of Waters from whence all Lisbon is supplied though the source is 21 miles distant – This stupendous aqueduct cross[es] the valley to the North East of the city. – Lisbon Nov. 18th 1865 – USS Colorado.' (well, here's a nice and friendly handbook...).



nn4 - Vista de Lisboa tirada do Castello de St. Georges (view of Lisbon taken from St. Georges fort) - Handwritten on the back: 'Vista de Lisboa tirada do Castello de St. Georges – City and Harbor of Lisbon – Oct. 30th / 65 – In the Commercial Square as seen facing the water can be seen the equestrian statue of King Joseph Ist. All the buildings on the square have been built since the year 1755.'



nn5 - Igreja de St. Vicente (Church of St. Vicente) - Handwritten on the back: 'Igreja de St. Vicente – Lisboa – St. Vincente de Fora – This church was founded by Don Affonso Henriques when he took the town of Lisbon in 1147 and was reconstructed by Philip 2nd. In this Church there exists a reserved mortuary chapel destined for the Braganza dynasty. The building adjoining the Church which was originally a convent for Augustine monks is now the residence of the diocesan prelate, the M. (?) E Cardinal Patriarch of Lisbon – Lisbon Nov 17th 1865 – U. S. S. Colorado'.



nn6 - Praça do Príncipe Real (Príncipe Real Square) - Handwritten on the back: 'Praça do Príncipe Real – Lisboa – Portion of the City of Lisbon – Portugal – Oct 30th 1865'.



nn7 - Palácio da Ajuda (Ajuda Palace) - Handwritten on the back: 'Palácio da Ajuda – Royal Palace of Belem'.



nn8 - Vista do Tejo tirada do Hotel Bragança (view of the Tagus river, taken from Hotel Bragança) -

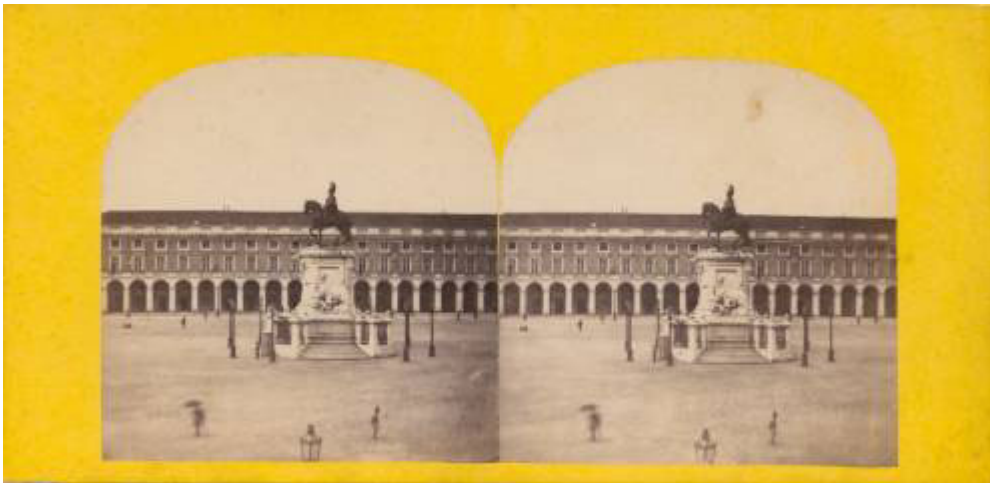
(4 / 10) Anonymous Views –Lisboa

---

Handwritten on the back: 'Vista do Tejo tirada do hotel de Bragança – Lisboa – Portion of city and harbor of the City of Lisbon – Portugal – Oct 30 / 65'.



nn9 - (view of the Intendente square) - Nice example of a late stereoview (probably early 1900s), with occupational (fish sellers) and transportation (electric tramway, animal traction) interest.



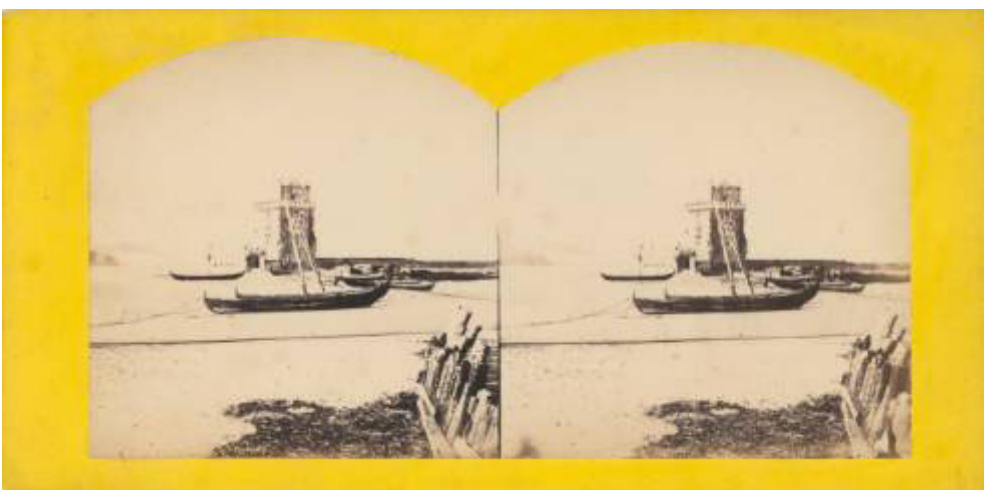
nn10 - (Commerce Square, side view) - Stamped on the back: 'Campos Junior – Livraria – Rua Augusta – Lisboa'.



nn11 - (Commerce Square, front view) -



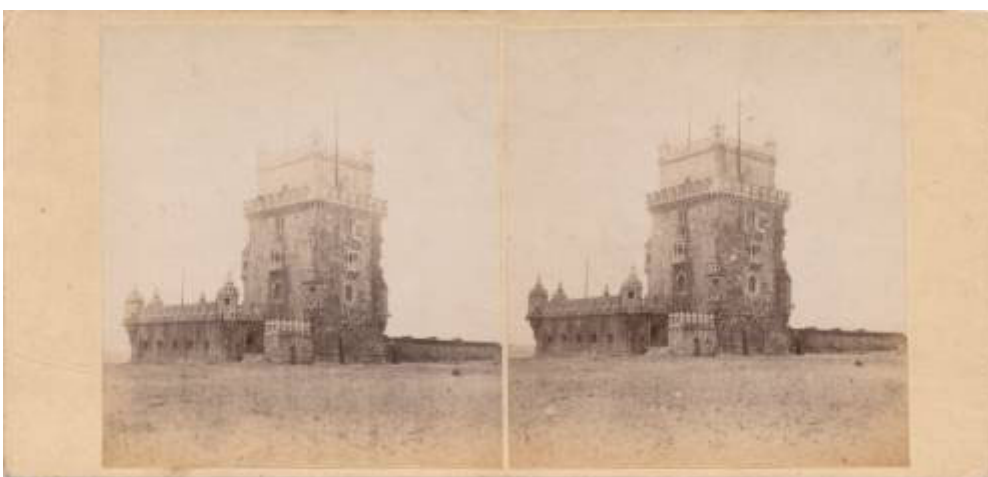
nn12 - (overview of Lisbon) - Handwritten on the back: 'Panorama de Lisboa'.



nn13 - (Tower of Belém) - Handwritten on the back: 'Torre de Belém'.



nn14 - (side view of the Theatre D. Maria) - Handwritten on the back: 'Theatre of Maria 2nd Lisbon'



nn15 - (Tower of Belém) - Handwritten on the back: 'Belem Castle Tagus'



nn16 - (Overview of Lisbon) - Handwritten on the back: 'Panorama de Lisboa'



nn17 - (Tower of Belém) - Handwritten on the back: 'Torre de Belem – Belem Tower – Lisbon Portugal – Feb. 10th 1875 – A. Ludlow Case Jr.'



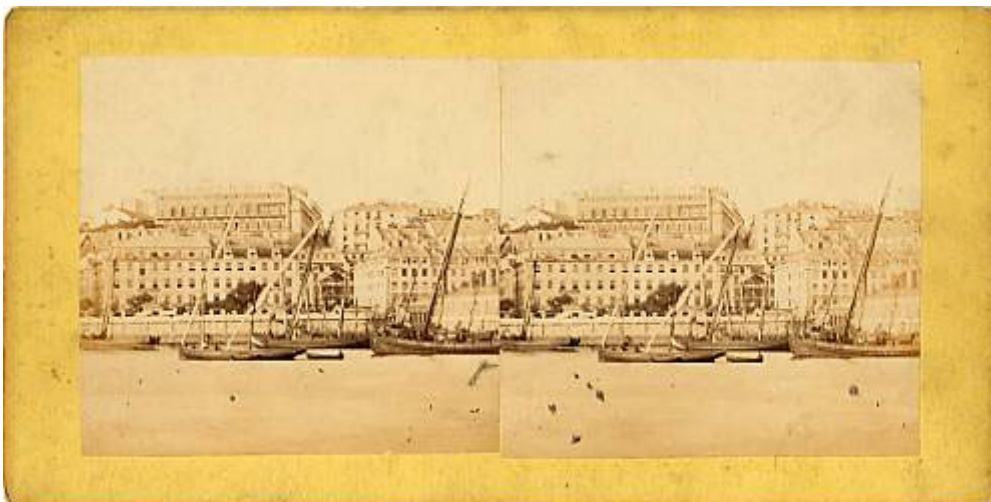
nn18 - (fine early view of Rossio) - Handwritten on the back: 'Theater of Dona Maria in Dom Pedro Square Lisbon is built on the site of the palace of the Inquisition.' (formerly in the collection of Tex Treadwell)



nn19 - (Ajuda Palace) - Handwritten on the back: 'Ajuda Lisboa?'. (formerly in the collection of Tex Treadwell)



nn20 - Capela-mor da Igreja de S. Roque - (belongs to the Clube Photographico, n.º 71) (courtesy of Nuno Borges de Araújo)



nn21 - (view taken from the river, showing boats and the city line) - (courtesy of Nuno Borges de Araújo)

---





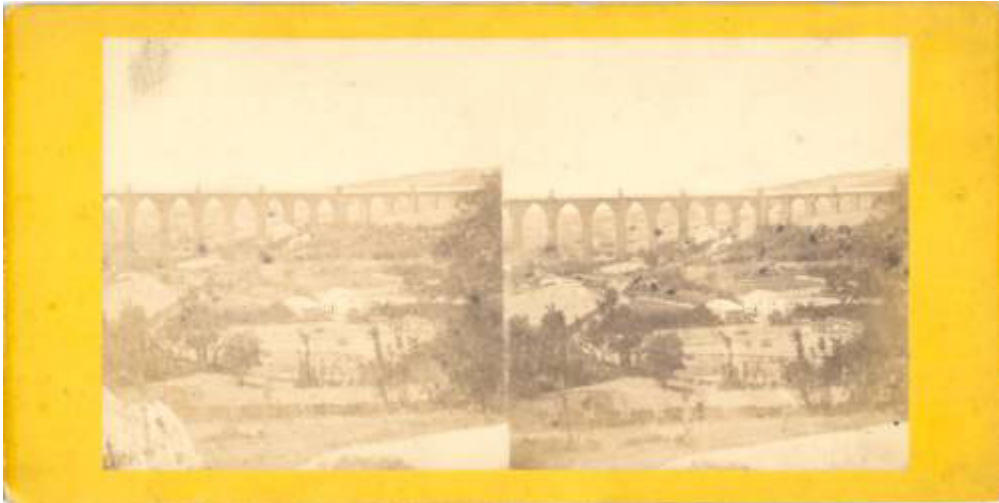
nn22 - Statue of the Black Horse Square - (handwritten caption in the backside)



nn23 - Aqueduct – Lisbon -



nn24 - (an early view of the Commerce Square, unfortunately empty of people) -



nn25 - (another view of the aqueduct) - Handwritten captions in the back: 'Arcos de Agoas Livres' and 'Aqueduct, Lisbon'.



gv1 - Lisbonne (a 4,5 x 10,7 cm glass view) - This view belonged to a box describing a trip from Lisbon to South America that took place in 1914 (only the first view was indeed of Lisbon). Verascope format common in the early 20th century.