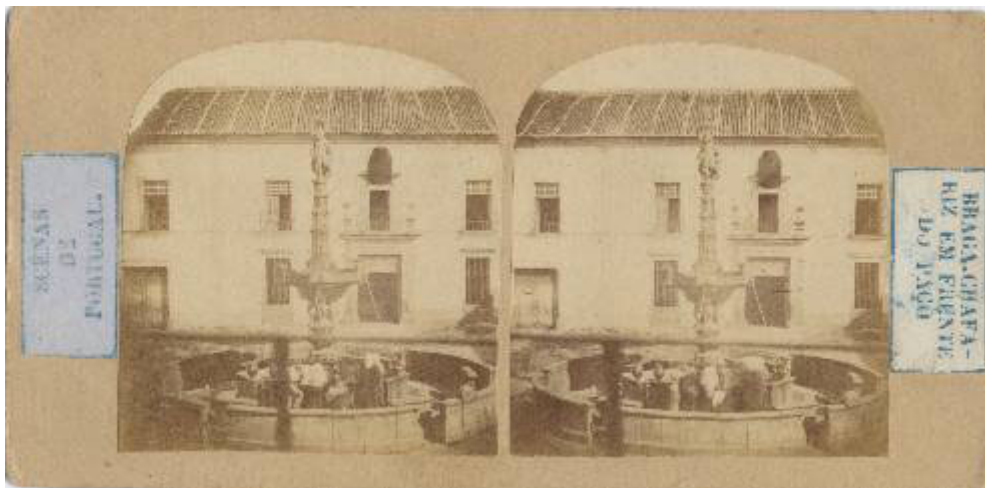




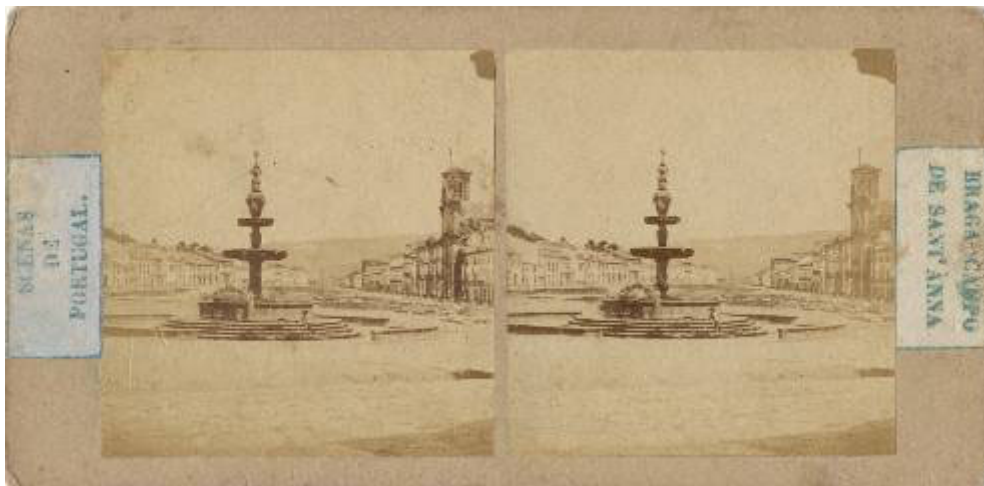
nn1 - St. Anthony's Chapel - Handwritten caption on the backside: 'Braga – Ermida de Sto. Antonio'.



nn2 - Cenas de Portugal - Braga - Chafariz em frente do Paço - (courtesy of Nuno Borges de Araújo)



nn3 - Cenas de Portugal - Braga - Capela-mor da Sé - (courtesy of Nuno Borges de Araújo)



nn4 - Cenas de Portugal - Braga - Campo de Santana - (courtesy of Nuno Borges de Araújo)



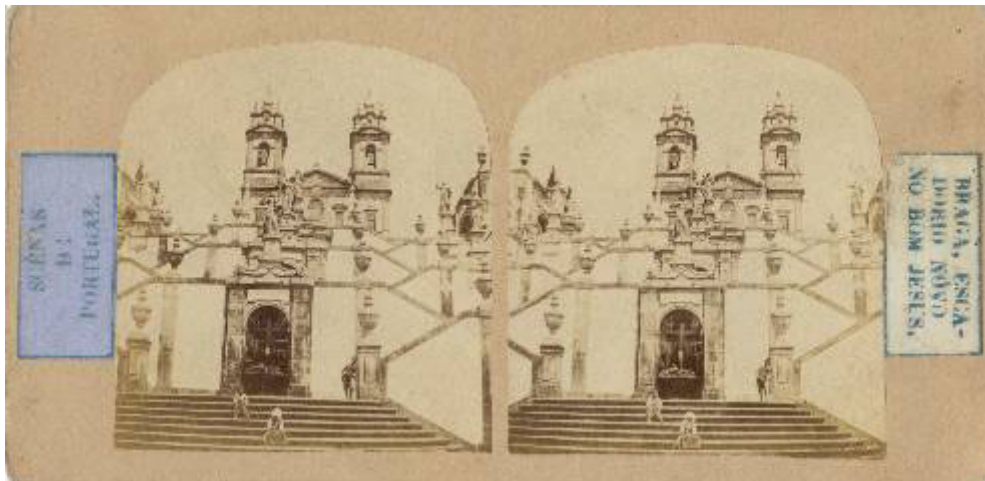
nn5 - Cenas de Portugal - Braga - Hospital de S. Marcos - (courtesy of Nuno Borges de Araújo)



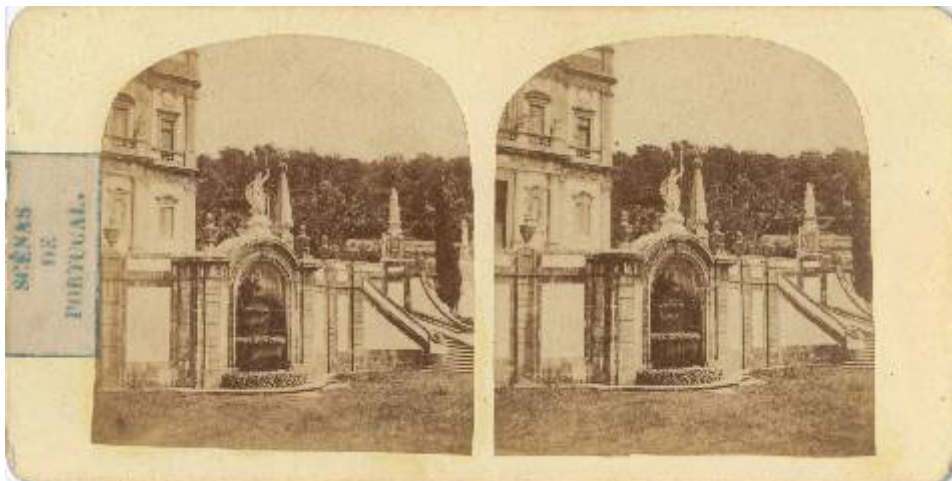
nn6 - Cenas de Portugal - Braga - S. João do Souto - (courtesy of Nuno Borges de Araújo)



nn7 - Cenas de Portugal - Braga - Escadório Velho no Bom Jesus - (courtesy of Nuno Borges de Araújo)

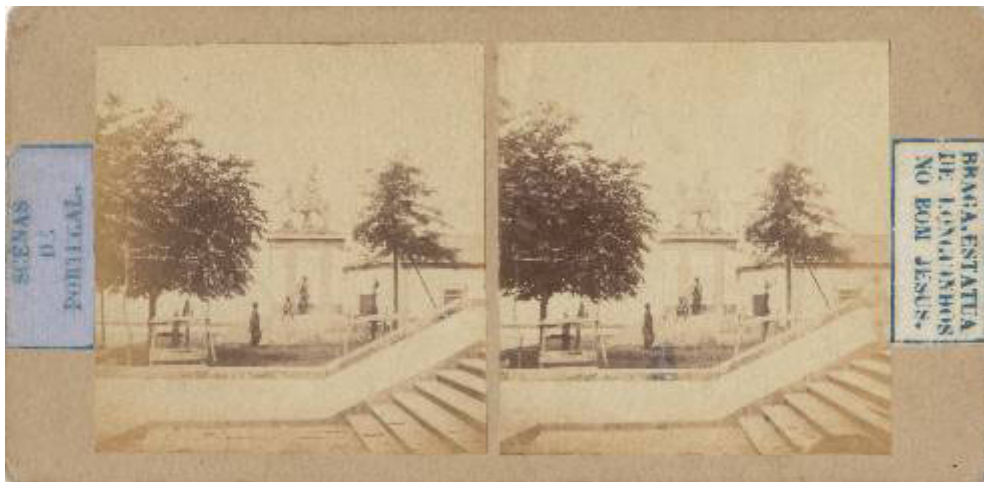


nn8 - Cenas de Portugal - Braga - Escadório Novo no Bom Jesus - (courtesy of Nuno Borges de Araújo)



nn9 - Cenas de Portugal - Braga - Fonte a Moisés no Bom Jesus - (courtesy of Nuno Borges de Araújo)

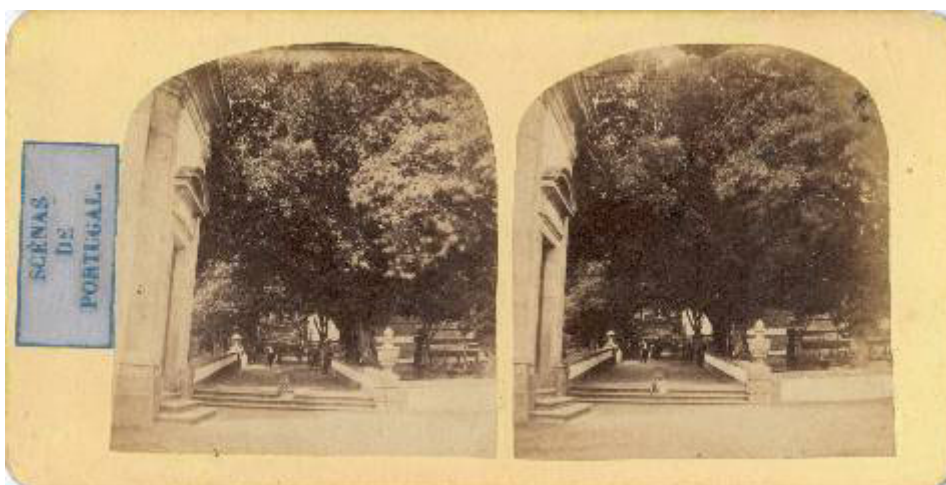




nn10 - Cenas de Portugal - Braga - Estátua de Longuinhas no Bom Jesus - (courtesy of Nuno Borges de Araújo)



nn11 - Cenas de Portugal - Braga - Interior do Templo do Bom Jesus - (courtesy of Nuno Borges de Araújo)



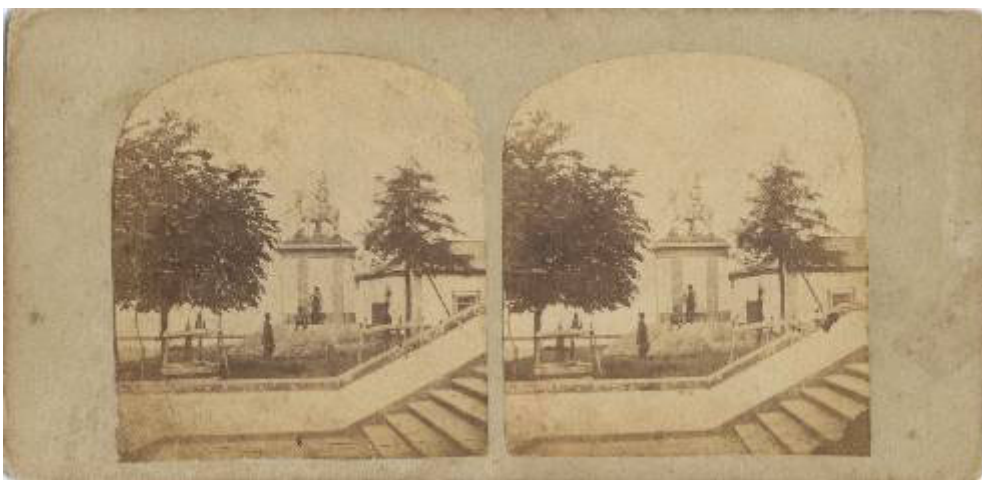
nn12 - Cenas de Portugal - Braga - Alameda no Bom Jesus - (courtesy of Nuno Borges de Araújo)



nn13 - Misericórdia de Braga - "P.M." engraved in relief at top centre (courtesy of Nuno Borges de Araújo)



7 - Portugal - Braga - Bom Jesus do Monte - Escadório Norte - (courtesy of Nuno Borges de Araújo)



36 - Portugal - Braga - Bom Jesus do Monte - Estátua de Longuinhos - (courtesy of Nuno Borges de Araújo)